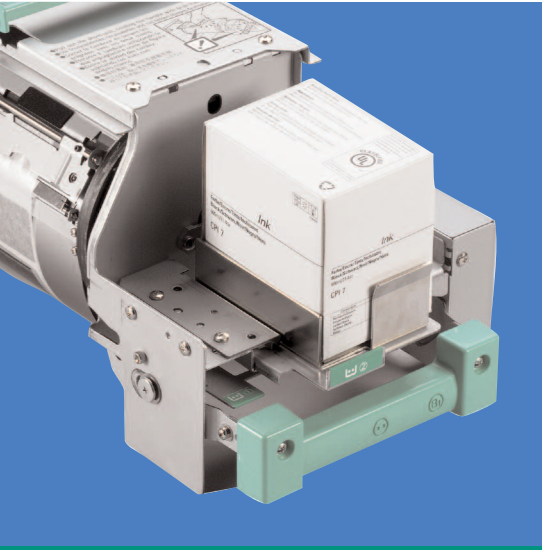


Ricoh Priport DX 3343
Digital duplicator
Meeting Your Duplicating
Demands Affordably

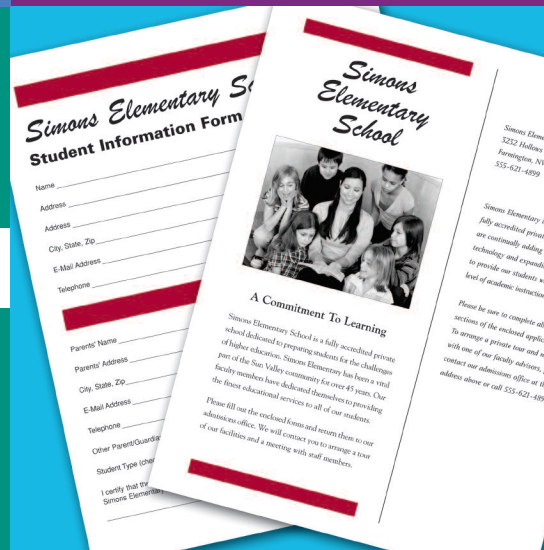
RICOH



productive



economical



value



Ricoh Priort DX 3343

Meeting Stringent Duplicating Demands

RICOH®, the leading manufacturer of digital office equipment, has designed the Priort DX 3343 to meet the duplicating needs of professional educators, administrators and government agencies with unrivaled versatility, productivity and value.

Cost Saving Value

Low-cost printing saves money with every print job.

- Print at rapid output speeds of up to 130 pages per minute for as little as one-third of a cent per print.
- Get your message out to large groups of people quickly and economically, without sacrificing print quality.

Printing Made Easy

The LCD panel was designed with increased accessibility and visibility, making the unit fully compliant with accessibility and rehabilitation.

- Easily guide the user through step-by-step operations for any print job with the panel's brightly lit Multipurpose LCD graphics.
- Using the single Start Key eliminates the problem of pressing the wrong key when making masters and printing, virtually eliminating output errors.

Performance Driven

Speed, flexibility and economy are built into every Ricoh Priort DX 3343...

- Print on a wide variety of paper stock — including construction paper and card stock. This type of versatility is perfect for educators whether producing tests, flyers or permission forms on plain paper or generating report cards and posters on heavy stock. Government agencies have the flexibility to produce multi-page documents quickly and inexpensively while maintaining a professional look.
- The larger 11" x 17" scanning area is great for text books and the Auto Center/Edge Erase function eliminates unsightly binding margins, making documents more readable and attractive.
- Add a bold splash of color to your documents with optional, quick-changing color drums and Ricoh's standard color inks.
- Two controller options allow you to print documents directly from your Windows PC, the VC-20 for local printing or the Type 4545A with network capability. When you connect your Priort DX 3343 using the Type 4545A Embedded Controller, you can take advantage of additional Ricoh software solutions such as @Remote, WebImageMonitor and more.
- The revolutionary Snap Open Master Eject Box disposes of masters quickly and neatly with no fuss and no mess.

Environmentally Engineered

Protecting our earth's resources is upmost in the design of the Ricoh Priort DX 3343.

- Since digital duplicators do not require heat as a component of the imaging process, they use much less power than other imaging devices.
- The Priort DX 3343's Instant Start Up Technology requires no warm-up time, further reducing energy consumption.
- The Automatic Shut-Off function completely shuts down the unit after a user-specified period of inactivity making it even more energy efficient than units with an energy saver mode.
- The Ricoh Priort DX 3343 complies with the RoHS and the WEEE directives to conserve the environment.

Mainframe

Printing Process	Fully automatic one-drum stencil system
Copying Speed	User adjustable: 80, 100, 130 cpm
Originals	Sheet/Book: Max. 11.7" x 17" (297 mm x 432 mm); (ADF) Min. 4.1" x 5.8" (105 mm x 128 mm)
Paper Size	Max. 11.7" x 16.5" (297 mm x 420 mm); Min. 3.5" x 5.5" (90 mm x 140 mm)
Paper Weight	12.5 lb. Bond to 110 lb. Index (47.1 to 209.3 g/m ²)
Printing Area	8.3" x 14" (based on "LG" drum)
Leading Edge Margin	5 mm +/- 3 mm (0.2" +/- 0.12")
Image Position	Vertical: +/- 10mm (+/- 0.4") [from control panel] min. 0.5 mm (0.02") Horizontal: +10 mm (0.4") manual
First Copy Time	32 seconds (in landscape only, using the exposure glass)
Image Modes	Letter mode, Photo mode, Letter/Photo auto separation, Pale, Pencil
Pixel Density	Master Making: 300 dpi x 300 dpi (normal mode) Scanning: 600 dpi x 300 dpi (normal mode) Master Making: 300 dpi x 400 dpi (fine mode)* Scanning: 600 dpi x 300 dpi (fine mode)* *Platen only
Spot Color	Selection of colors using optional replacement color drum
Reproduction Ratios	4 reduction: 93%, 77%, 74%, 65% 3 enlargement: 121%, 129%, 155% 1,000 sheets each (20 lb. paper)
Paper Feed/ Delivery Capacity	260 masters per roll (based on "LG" drum)
Master Roll Capacity	30 masters
Eject Tray Capacity	Master and paper (electrical)
Counters	120V, 60 Hz, Max. 210W; Energy Saver Mode less than 6.2W
Power Source	48.2" x 26.6" x 24.9" (1,224 mm x 681 mm x 633 mm) (mainframe, with table and platen cover in operating position)
Dimensions (WxDxH)	156.4 lbs. (71 kg) (with platen cover)
Weight	Energy Saver Mode, Fine Mode, Auto Shut-Off Mode, Combine 2 In 1, Economy Mode, Auto Center/Edge Erase, Memory (30) & Class (99) Mode, Skip Feed, User Codes (100 preset), Job Programs (9), Job Proofing, Security Mode
Special Features	40-sheet Automatic Document Feeder, PC Controller Network (Type 4545A), PC Print Controller (VC-20), Color Drum, Storage Cabinet, Tape Dispenser, Platen Cover
Optional Equipment	Black Ink, Color Ink, Master, Tape for Tape Dispenser
Supplies	

Automatic Document Feeder Type 20 – Optional

Original Capacity	40 sheets (letter-size, 20 lb.), 30 sheets (over letter-size, 20 lb.)
Original Weight	14 lb. to 28 lb. Bond (52 to 105 g/m ²)
Original Size	Max. 11.7" x 17" (297 mm x 432 mm); Min. 4.1" x 5.8" (105 mm x 128 mm)

PC Controller Network (Type 4545A): Embedded Type – Optional

Printer Language	RPCS
Host Interface	USB 2.0
Network Interface	100Base-TX/10Base-T
Protocol	TCP/IP, NetBEUI
Supported Resolutions	300 dpi
WebImageMonitor	Available
Supported OS	Windows(*), 2000, XP, 2003, Vista, Windows 7 (*Exclude Cluster and Terminal)

PC Print Controller (VC-20): Embedded Type – Optional

Controller Type	Windows GDI
Print Driver OS	Windows 98se/ME/2000/XP, Vista, Windows 7
Support	
Resolution	300 dpi
Host Interface	USB2.0/1.1 Compatible (cable user-supplied)
Minimum PC Requirement	PC AT compatible; 500 MHz; 128 MB RAM; 2 GB free space

Tape Dispenser: Tape Dispenser Type 20

Ricoh Consumables: for maximum performance and yield, we recommend using genuine Ricoh parts and supplies.



RICOH
www.ricoh-usa.com

Bringing Ricoh Value to Your Organization
Ricoh technology offers a diverse portfolio of solutions to help your organization stay competitive and move ahead. Let Ricoh show you how to empower your business to improve critical processes, keep information secure, ensure compliance and promote environmental sustainability while reducing the total cost of ownership.



Ricoh Americas Corporation,
Five Dedrick Place, West Caldwell, NJ 07006
Ricoh® and the Ricoh Logo are registered trademarks of Ricoh Company, Ltd. All other trademarks are the property of their respective owners. Print speed may be affected by network, application or PC performance. Specifications and external appearances are subject to change without notice. Products are shown with optional features.